

Updated Covid Guidelines

Term 1

2022–23 Academic Year

Updated July, 2022



Contents

- 01. [updated] Emergency Response Plan
- 02. [updated] Terminology
- 03. [updated] ATK Testing Procedure
- 04. [updated] Primary Arrival/Dismissal
- 05. [updated] Secondary Arrival/Dismissal





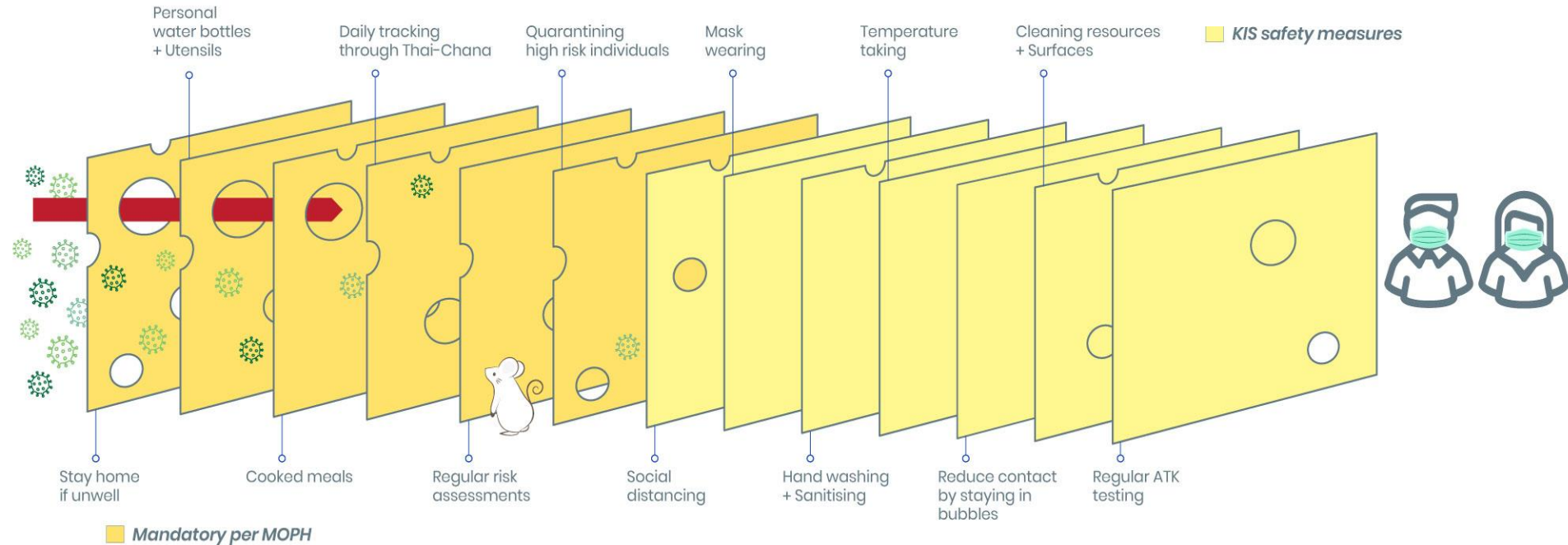
01

Updated Emergency Response Plan

Swiss Cheese Model

Swiss Cheese Respiratory Virus Pandemic Defence

Each intervention (layer) has imperfections (holes). Multiple layers improve success.



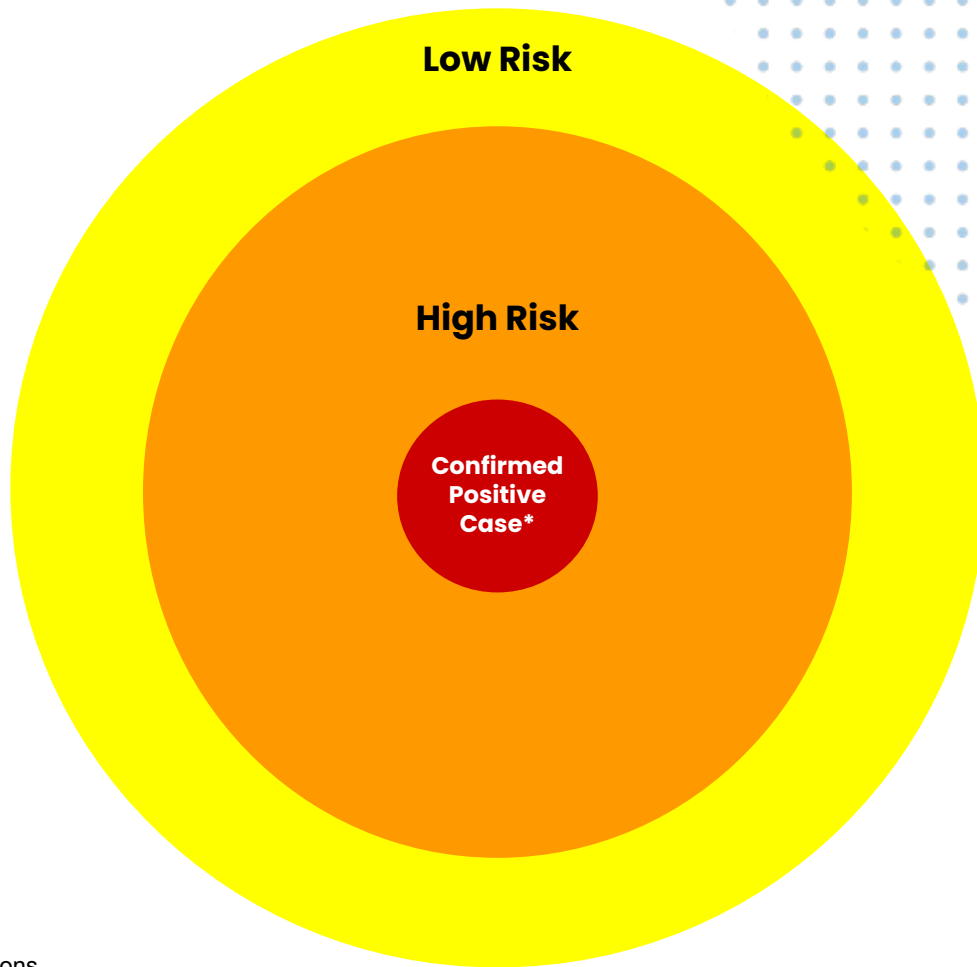
Circles of Contact

We have updated our definitions to comply with the latest MoPH guidelines

Confirmed positive case (patient) - A person who has tested positive by two ATK tests or one PCR test

High Risk is defined as a close contact who is having conversations with the patient within 1 - 2 meters for more than 5 minutes; being coughed or sneezed on by a patient who did not wear a mask. **Or**, a close contact who is in an enclosed space without proper ventilation, e.g. in the same air-conditioned bus/room as the patient for more than 30 minutes.

Low Risk is defined as a close contact who is less likely to contact with the patient. This includes close contacts who have not met the definition for high-risk close contact.



*As defined by government regulations

KIS COVID-19 Guidelines [July 15, 2022]

**In accordance with the new MoPH definitions and protocols announced on May 21, 2022.*

Status	Definition	KIS Health & Safety Protocols
Healthy individuals: Members of the KIS Community and visitors, vendors, outsource staff who wish to enter the campus.	An individual with no flu or cold-like symptoms i.e. no fever, or running nose, or continuous sneezing, coughing, or breathing with difficulty.	<ul style="list-style-type: none">- Students and staff are required to submit ATK test results every Sunday between 8:00 am – 8:00 pm, through the KIS Health portal.- School Passes and temperature taking are required for campus entry.- All individuals are required to wear masks in enclosed and air conditioned spaces, including while on school buses/shuttles and in offices shared with others.- Mask wearing is not required while engaged in sports activities, both indoors and outdoors, for classes or recreation, or while in open air spaces, including playgrounds, except while in the car park.- Frequent hands and surface cleaning/sanitising will be continued.- Individuals with a fever, and flu or cold-like symptoms will be quarantined on campus, and sent home as appropriate.- KIS will do overnight deep cleaning in classes/offices/ buses where a confirmed case has been.

KIS COVID-19 Guidelines [July 15, 2022]

Status	Definition	KIS Health & Safety Protocols
Low risk contact	<p>An individual who has been been following Universal Protection (DMHTA) protocol at all times.</p> <p>This includes a person who</p> <ol style="list-style-type: none">1. may have been in contact with an infected person for a short period of time <u>while wearing a mask</u>.2. has been engaged in sports, swimming or outdoor activities with no direct contact with a confirmed case for a prolonged period of time.3. has recovered from COVID 19 in the past 30 days, is fully vaccinated and tested ATK negative before entering the campus.	<ul style="list-style-type: none">- No quarantine is required.- Self-monitoring for 10 days is advised.- For health and safety precautions, ATK tests are advised on days 5 and 10. <p><i>*self-monitoring requirements are covered by normal Universal practice at school (e.g. mask wearing, temperature-taking, etc.)</i></p>

KIS COVID-19 Guidelines [July 15, 2022]

Status	Definition	KIS Health & Safety Protocols
High risk (primary) contact	<p>An individual who has been within 1 meter, <u>without a mask</u>, for more than five minutes, with a confirmed case (positive ATK/PCR test results).</p> <p>This includes socialising, eating and drinking together while on campus with no dividers, or at home or in restaurants. This includes household members of the confirmed case, including domestic helpers and drivers.</p> <p>This also includes an individual who has been in an enclosed space such as traveling on a bus or being in a small office (regardless of distance from a confirmed case).</p>	<ul style="list-style-type: none"> - Quarantine is not required for high-risk persons. - The individual may enter the campus with the appropriate School Pass. - Self-monitoring for 10 days is strongly advised. - If flu or cold-like symptoms occur, the individual should immediately take an ATK test, and submit the result to the KIS Health portal. - If there are no symptoms, ATK test results are required to be submitted to the KIS Health portal on days 5 and 10, counting from the first day of encounter with the confirmed case. <p>The advice below is recommended:</p> <ul style="list-style-type: none"> - Leave home only when necessary. - Maintain distance from others when on campus. - Follow Universal Protection protocols (DMHTA) at all times. - Avoid public places, crowded places and public transport as much as possible. - Submit ATK test results on days 1, 5 and 10 to the KIS Health Portal.

KIS COVID-19 Guidelines [July 15, 2022]

Status	Definition	KIS Health & Safety Protocols
Confirmed case	A person who has tested positive by an ATK or PCR test	<ul style="list-style-type: none">-The infected individual receives medical treatment and self isolates for 10 days.- A negative ATK test result needs to be submitted through the KIS Health portal before returning to campus <p><i>*According to the MoPH new definition and protocol announced on May 21, 2022.</i></p>

COVID-19 Flowchart for Students

These protocols are based on the guidance from the Thai Ministry of Public Health and The Centers for Disease Control and Prevention (CDC)



COVID-19 Symptoms

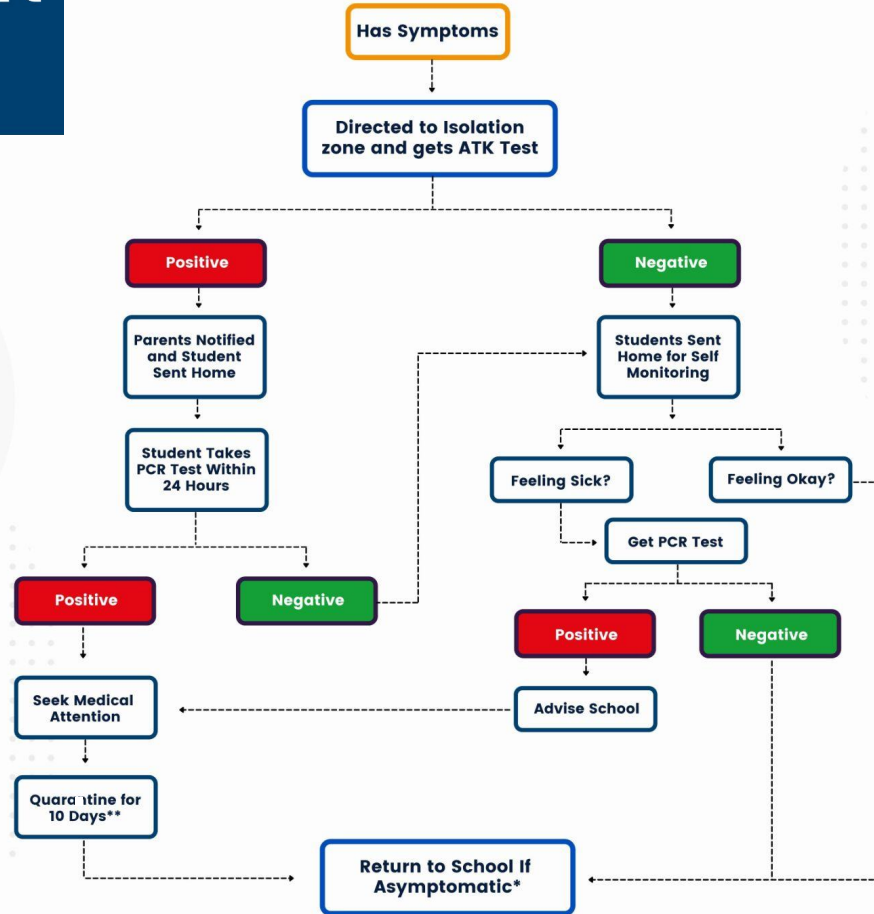
- Fever or Chills
- Sore Throat
- Cough
- Loss of Taste or Smell
- Headache
- Nausea or vomiting
- Diarrhea
- Shortness of Breath
- Congestion/Runny Nose
- Fatigue
- Muscle or Body Pain

Quarantine

Restricts movement of persons who were exposed to COVID-19 in case they become infected

Isolation

Separates those infected with COVID-19 from people who are not infected



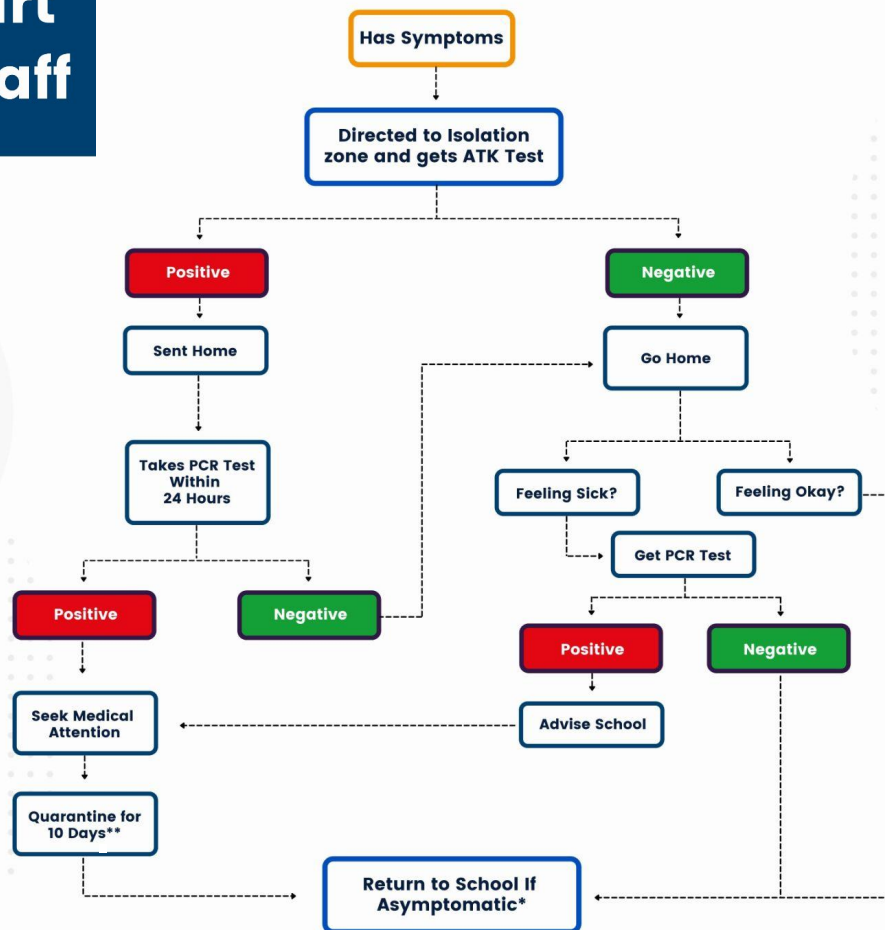
* All health criteria must be met before returning to campus

** With proof of PCR negative test

Note: Absences of more than two days require a medical certificates per our Parent Handbook

COVID-19 Flowchart for Faculty and Staff

These protocols are based on the guidance from the Thai Ministry of Public Health and The Centers for Disease Control and Prevention (CDC)



COVID-19 Symptoms

- Fever or Chills
- Sore Throat
- Cough
- Loss of Taste or Smell
- Headache
- Nausea or vomiting
- Diarrhea
- Shortness of Breath
- Congestion/Runny Nose
- Fatigue
- Muscle or Body Pain

Quarantine

Restricts movement of persons who were exposed to COVID-19 in case they become infected

Isolation

Separates those infected with COVID-19 from people who are not infected

* All health criteria must be met before returning to campus

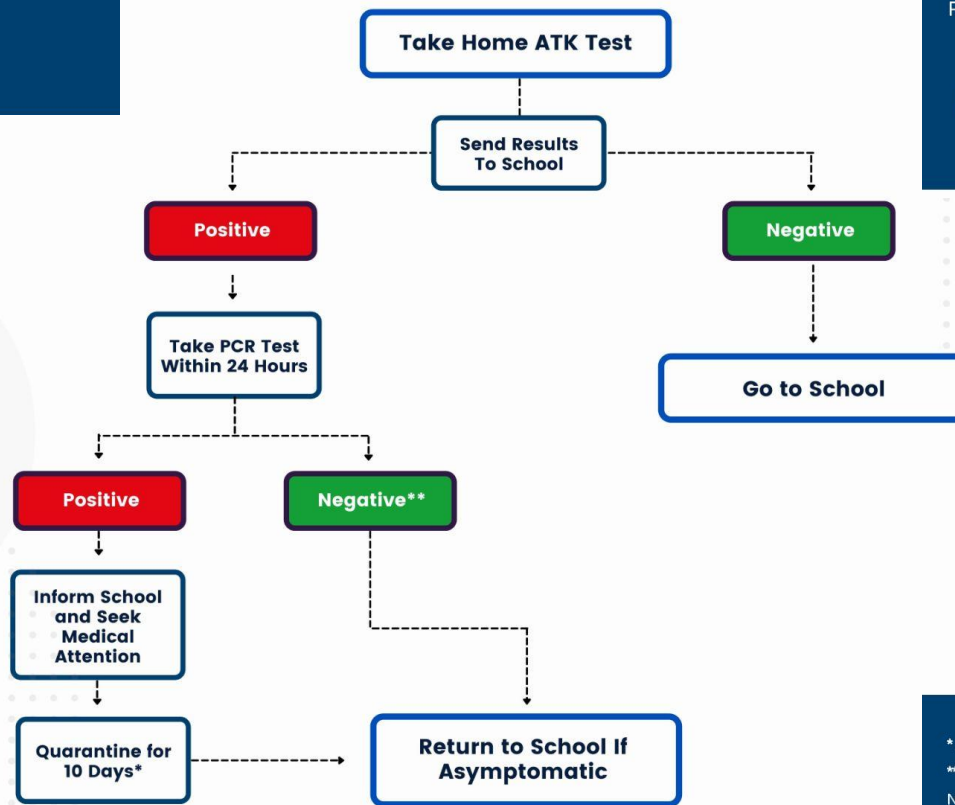
** With proof of PCR negative test

Note: Absences of more than two days require a medical certificates per our Parent Handbook

COVID-19 Flowchart

for Students, Faculty, and Staff at Home

These protocols are based on the guidance from the Thai Ministry of Public Health and The Centers for Disease Control and Prevention (CDC)



COVID-19 Symptoms

- Fever or Chills
- Sore Throat
- Cough
- Loss of Taste or Smell
- Headache
- Nausea or vomiting
- Diarrhea
- Shortness of Breath
- Congestion/Runny Nose
- Fatigue
- Muscle or Body Pain

Quarantine

Restricts movement of persons who were exposed to COVID-19 in case they become infected

Isolation

Separates those infected with COVID-19 from people who are not infected

* All health criteria must be met before returning to campus

** With proof of PCR negative test

Note: Absences of more than two days require a medical certificates per our Parent Handbook



02

Terminology

Important Terminology

- **High Risk** – a close contact who is had conversations with the confirmed case within 1 - 2 meters for more than 5 minutes; being coughed or sneezed on by a confirmed case without a mask; A close contact who is in an enclosed space without proper ventilation, e.g. in the same air-conditioned bus/room as the patient for more than 30 minutes.
- **Low Risk** – a person who had contact with a positive COVID-who is less likely to contact with the patient. This includes close contacts who have not met the definition for high-risk close contact.
- **Self-Isolation** – Separation of high risk individuals from crowded areas (ex. school, restaurant) limiting exposure to others.
- **Quarantine** – Restricts the movement of positive test cases and their household members for 10 days.

**As defined by government regulations*



Important Terminology

- **ATK** – Antigen Test Kit is a rapid at-home test for Covid. It will be used regularly by students and faculty to access campus and tests must be administered at home and uploaded to the new Health Portal (see below).
- **PCR Test** – Stands for Polymerase Chain Reaction test. PCR technology is considered the benchmark of diagnostic testing, and is still considered the gold standard across the medical community.
- **CRT** – Stands for Covid-19 Response Task Force, and is the advisory board of KIS Leadership to respond to pandemic related matters in our community.
- **Health Portal** - New KIS portal where vaccination history and regular ATK tests are submitted to access campus.



Important Terminology

- **Swiss Cheese Model** – The Covid-19 pandemic defense model that has multiple layers of defense* to keep us safe (see image on slide 22).
- **Hybrid Learning** – A teaching and learning model that includes in-person and remote learning, with the option for students to be entirely remote if needed.
- **School Pass** – The email you will receive authorizing you to enter campus after answering screening questions and submitting negative ATK results through our Health Portal (slide 20).





03

ATK Testing Procedure

KIS Health Portal

KIS has developed a health portal for parents and staff **to comply with the government reporting requirements for vaccination record keeping and regular ATK testing.**

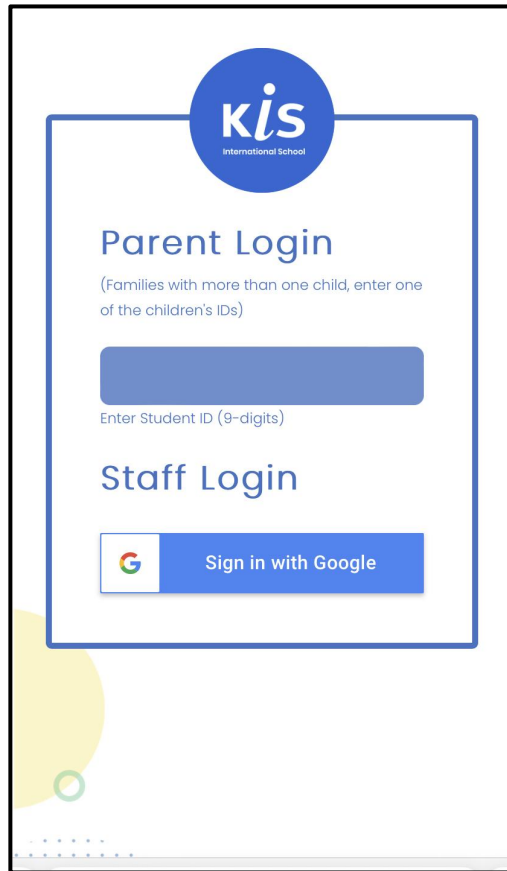
To access, visit health.kis.ac.th on your computer or mobile device.

Login using your child's 9 digit ID.

Questions?

Please direct student questions to student.atk@kis.ac.th

Please direct faculty/staff question to staff.atk@kis.ac.th



The screenshot shows the KIS Health Portal login interface. At the top is the KIS International School logo. Below it, there are two main sections: 'Parent Login' and 'Staff Login'. The 'Parent Login' section includes a note '(Families with more than one child, enter one of the children's IDs)' and a blue input field for the student ID, with the label 'Enter Student ID (9-digits)' below it. The 'Staff Login' section features a 'Sign in with Google' button with the Google logo. The entire interface is framed by a blue border and set against a white background with blue and yellow decorative elements.

KIS Health Portal




Anyone going on campus must upload proof of a negative ATK test to come on campus. This includes students, staff, parents, and visitors.

Once you login, you will see updated notifications with reminders and when the next ATK test is due.

KIS requires students and staff to take one test a week every Sunday. Parents who are electing to be on campus (you are welcome) must do the same.

Upload the vaccination information for all household members.



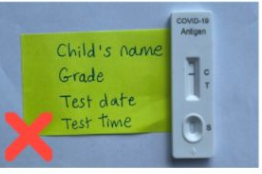

After uploading your ATK results correctly, you can indicate up to three emails to receive the School Pass. The School Pass must be shown to enter campus in your designated area.



ATK Test Schedule

Period: 24-28 January, 2022

New labeling requirement starting Sunday 29 January, 2022



Name, date labeling must be written on the test kit

No labeling on a piece of paper

No app editing used for labeling

No label

ATK testing schedule

Primary students

EY1, EY2, EY3, G1, G2, G3, G5 testing is on Sunday 23rd January and Wednesday 26th January between 8 a.m. and 8 p.m.

G4 testing is on Thursday 27th January


Secondary students

G6-G12 students testing on Sunday 23rd January and Wednesday 26th January between 8 a.m. and 8 p.m.


Note:
Only EY1-EY2-EY3 parents will be allowed to come with their child to the classroom, they are to upload their ATK result on this portal under their profile. Please upload your result on Sunday and Wednesday.

School Pass validity period clarification:
Neg. ATK test submitted on Sunday will gain access to school campus on Monday, Tuesday and Wednesday.
Neg. ATK test submitted on Wednesday will gain access to school campus on Wednesday, Thursday, Friday and Saturday.

Wednesday is now an onsite school day, students can upload their test result when they get home from school on Wednesday. We are trying to be flexible with the cut off time for Wednesday and would like to give families time to get into the swing of doing the test and picking up your child from school at the same time. We anticipate a large back log on Wednesday evening so please bear with the delay if you haven't received the school pass after an hour.



ATK Result



Vaccine Status

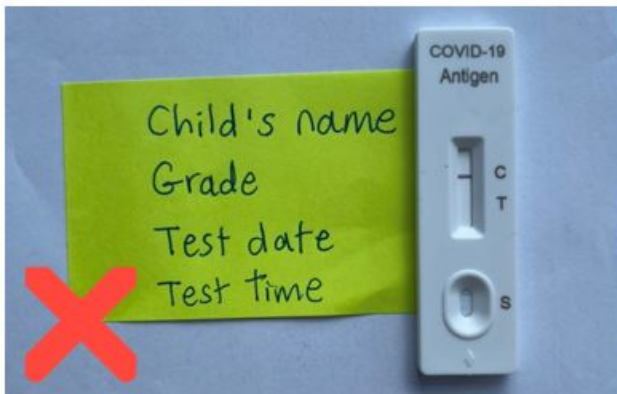
KIS Health Portal

To maintain accuracy of the ATK result and to help speed the approval process, details must be written directly on the actual test kit.

Please see examples below.



Name, date labeling must be written on the test kit



No labeling on a piece of paper



No app editing used for labeling



No label

If you have any issues please direct student questions to student.atk@kis.ac.th

If you have issues as faculty and staff of KIS, direct to your questions: staff.atk@kis.ac.th

ATK Test Instructions

Your ATK submission will generate the School Pass which is required to enter campus.

All students will test on Sundays and students returning from Quarantine of self isolation the day before school.

1. Take the ATK test **on Sunday (8am - 8pm)** before campus access for the upcoming week. An earlier submission within that time frame is appreciated.
2. Label your test with name and date.
3. Open the KIS Health Portal app
4. Upload a photo of the ATK test results
5. Await an approval email with a School Pass
6. Show the School Pass to security to gain access to campus each day of that week.

Note: If you do not test ahead of time you will not be allowed on campus.

Tips:

#1 Check the spam box if you don't get an email.

#2 If you copy and paste your email, make sure there are no "invisible" spaces, as this will make an email invalid and you will not receive your pass

If you come to campus without a School Pass, you will be directed to the Isolation Area and will have to purchase a test from our nurses office for 200 baht. This will also delay your access to campus and may put people at risk.

ATK Questions

Which ATK test does KIS allow?

KIS accepts the brands that have been approved by Thai FDA. Approved kits should bear a Thai label with clear instructions for self use. **KIS accepts both nasal and saliva tests for all students.**

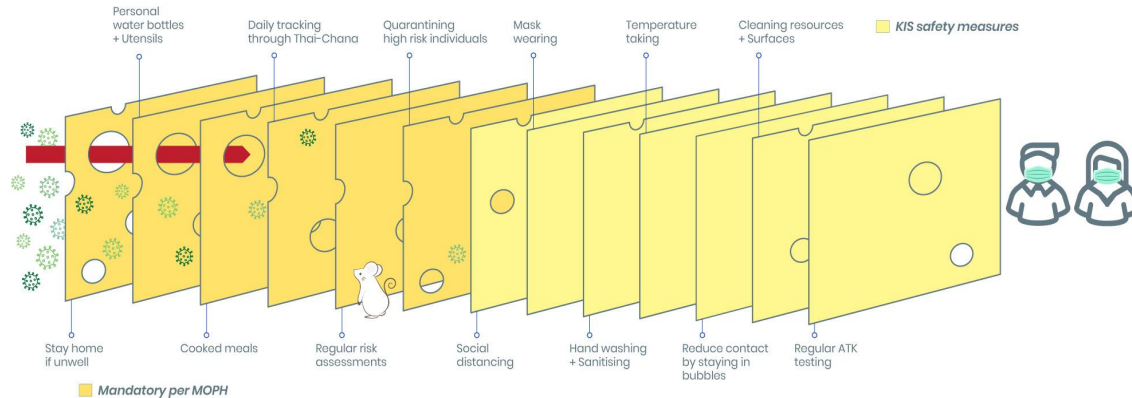
How does the school and parents know that kids are safe by showing a negative ATK test result?

No one intervention is a guarantee of safety, that is why we have a multi-layer approach to contact tracing and prevention.

Swiss Cheese Respiratory Virus Pandemic Defence

Each intervention (layer) has imperfections (holes). Multiple layers improve success.

kis International School



Source: Adapted from Ian M. Mackay (virologydownunder.com) and James T. Reason.

04

EY Arrival and Dismissal



Early Years: EY Drop-Off/Arrival

1 Parents are welcome to come on to the campus, EY1-2 families arriving by **private transportation** must park along the main road in front of the school or the KIS carpark and enter campus through the screening zone at one of the two campus entrances. The street parking can get crowded but is closer to the main Primary School entrance. Parents will need to show their vaccination card, Smart Card, and School Pass at the screening zone. Teachers will greet students in their classrooms at 7:50.

Parents arriving by foot/public transportation enter as above and follow same guidelines.

Students arriving by bus show their Smart Card and School Pass before getting on the bus (at home), they will be escorted to area #2 to enter school and will be supervised as they go straight to class.

All entries are through the Primary School gates, no exceptions - thank you for your cooperation.



Early Years: EY Pickup/Dismissal

- 1 Students departing by **private transportation** wait in their classrooms until their parents arrive to take them home.
- 2 Students departing **by bus** will be taken to #2 and handed over to bus monitors by an EA (Educational Assistant).



05

Grade 1 – Grade 5 Arrival and Dismissal



Primary School Drop-Off/Arrival

1

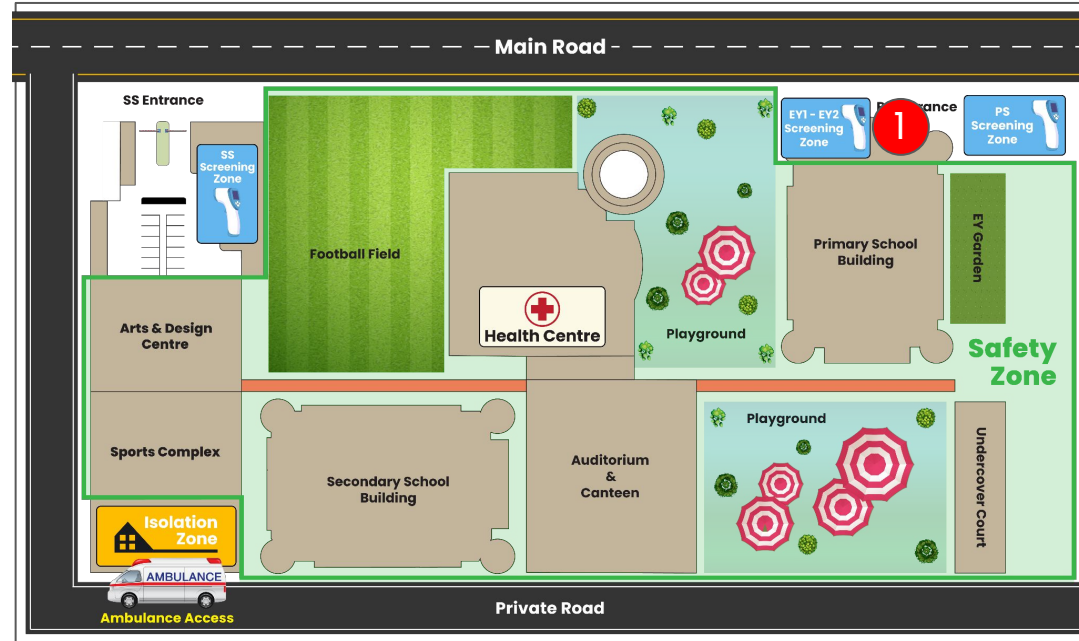
Students arriving by **private transportation** should be dropped off following their specific grade level schedules. Please have the school pass ready to share with the guards.

All primary school students (other than EY1 half-day students) should be dropped off by 7:50 and picked up at 2:30.

Students arriving **by bus** will be dropped off by the flap-gate (security) entrance and escorted to the flap gates by the bus monitors.

Students being dropped off by parents who are walking, taking a taxi, or on public transport should also drop off by the flap gates (security).

Please make sure your child has their School Pass and Smart Card to enter the school.



Primary School Pick-up/Dismissal

- 1 Students departing by **private transportation** will be picked up by parents from the classroom.
- 2 Students departing **by bus** will be taken to #2 and handed over to bus monitors by an EA (Educational Assistant).



Please depart the school campus once your child has been picked up. Thank you.



Secondary School Arrival/Dismissal

Secondary School Drop Off/Arrival

Drop off 6:45 am – 7:30 am

- 1 Students arriving by private transportation (including taxis) enter at SS screening zone with Smart Card and School Pass upon arrival.
- 2 Students arriving by bus show School Pass before getting on the bus (at home), and proceed to temperature check line upon arrival.
- 3 Students arriving by KIS Shuttle Van (MRT) show School Pass before boarding shuttle and proceed to temperature check line upon arrival.

All students proceed to designated area after security.



Secondary School Pick Up/Dismissal

Drop off 2:45 pm – 3:15 pm

- 1 Students departing by private transportation wait near #1 until parents arrive.

Students who leave on their own go to #1 (taxi, Grab, or on foot)

- 2 Students departing by bus head to #2.

- 3 Students departing by KIS Shuttle Van (MRT) meet at #3



Shuttle Van Schedule

- Free shuttles are available to pick up/drop off students at the Thailand Cultural station MRT. Boarding is located at exit 2.
- The School Pass **must** be presented to the shuttle driver before boarding the vehicle. Student without a pass or with an invalid pass will need to find alternative transportation to school.

Shuttle Van Schedule

Morning : From MRT To KIS

(Boarding at Exit 2, MRT Thailand Cultural Center station)

- 6:40 a.m. (1 van)
- 6:50 a.m. (1 van)
- 7:00 a.m. (1 van)
- 7:05 a.m. (1 van)

Morning : From KIS To MRT

(Boarding at KIS Car Park)

- 8:10 a.m. (1 van)

Afternoon : From MRT To KIS

(Boarding at Exit 2, MRT Thailand Cultural Center station)

- 1:20 p.m. (1 van)

Afternoon

From KIS To MRT

(Boarding at KIS Car Park)

- 2:50 p.m. (3 vans)
- 3:30 p.m. (1 van)
- 4:00 p.m. (1 van)
- 4:20 p.m. (2 vans)
- 4:40 p.m. (1 van)
- 5:00 p.m. (1 van)

Afternoon

From KIS To MRT

(Boarding at PS Entrance)

- 2:35 p.m. (1 van)
- 3:10 p.m. (1 van)

Primary students must have 1 adult accompanying on the van. G4-G5 primary students must contact transport@kis.ac.th if they want to ride on their own.

Thank you.

